



SCULPTURE AT THE MAIN COURTYARD



DINING AREA OVERLOOKING THE COURTYARD



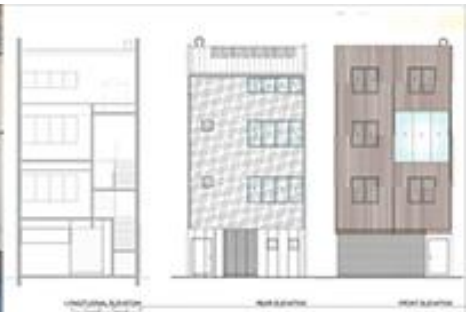
WATER FEATURE IN THE COURTYARD



LOUNGE AREA ON THE ROOFTOP

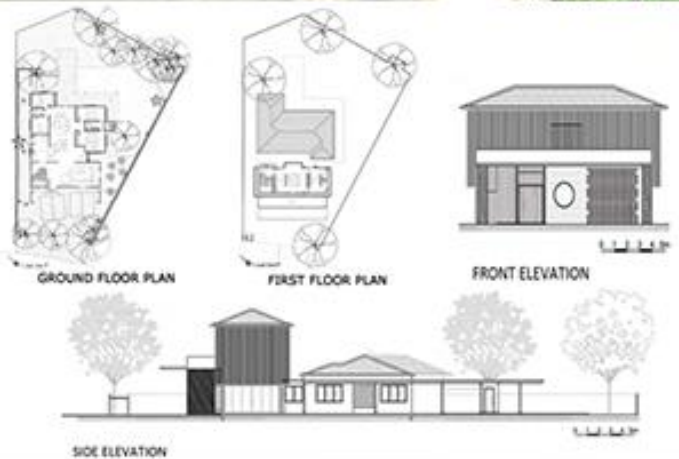


NIGHT VIEW OF THE FACADE SCREEN

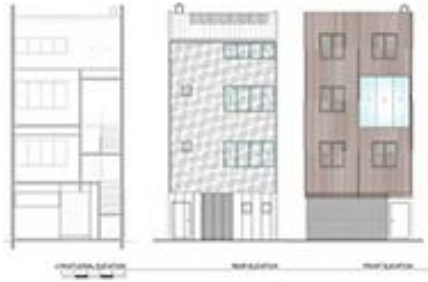
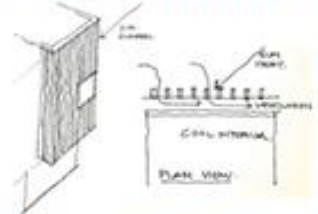


NO 19





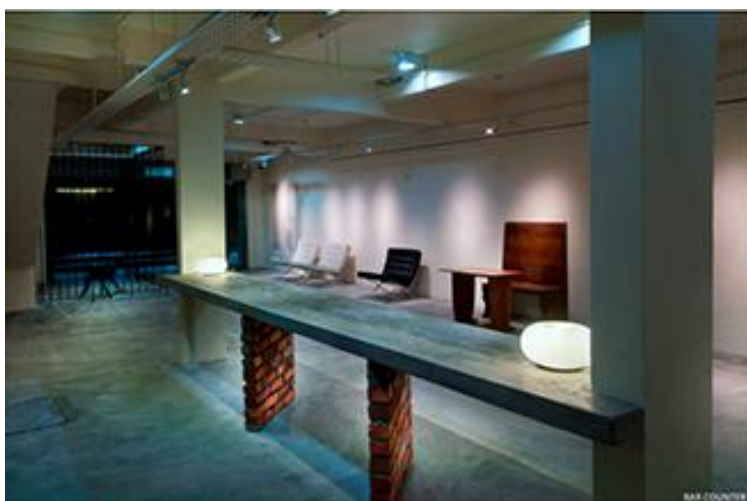




# NO.19



FLOODED LOUVERED FACADE

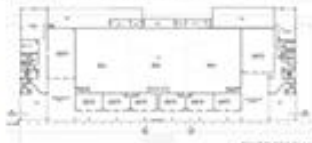






Overall Day View From Landscape Area

## SETIA CITY CONVENTION CENTRE



FIRST FLOOR PLAN



GROUND FLOOR PLAN



NORTH ELEVATION



SECTION OF THE FUNCTION AREA



EAST ELEVATION

ADDITIONAL SECTION





OVERALL NIGHT VIEW FROM LANDSCAPE AREA



THE FUNCTION AREA AT GROUND FLOOR



THE FUNCTION AREA AT FIRST FLOOR



LOBBY



THE FUNCTION AREA AT GROUND FLOOR



THE FUNCTION AREA AT GROUND FLOOR



THE FUNCTION AREA AT GROUND FLOOR



LOBBY



## SETIA CORPORATE HEADQUARTERS

### PARASOL AND COLUMNS

S.P Setia is one of the largest real estate developers in Malaysia. Their new large venture "Setia Alam" is located in Shah Alam, a city on the western border of Kuala Lumpur. In these approximately five thousand acres, S.P Setia decided to build their headquarters on four acre plot of land. This prompted the idea for a very formal design approach, to emphasize the company's social commitment to Malaysia's national development and to establish itself in the new city. Moreover, the Setia Headquarters is designed throughout according to the state-of-the-art "green" building standards, and is the first private commercial building in Malaysia to receive the platinum certification in green architecture.

In the first instance, we wanted to emphasize S.P Setia's ability to provide a positive response to the environment. For this reason, the entire design involved the application of high performance features in green architecture. During the conceptual phase, the "Setia Parasol" highway to the south, and the large reservoir on the east side, played an important role in determining the design decisions. To enhance the maximum public connectivity from a distance, this southeast corner was developed with special care. The nine columns rising 30.5 meters lift the building like a parasol into the sky. These columns also echo the monumentality of Greek architecture language translated into a Malaysian climate. The introduction of a large, shallow water body at ground level makes the building look as if it is floating, while also honoring the importance of rain in this part of the world. The avoidance of any typical boundary demarcations on the east flank, together with the physical and visual links with the reservoir catchment pond and the surrounding landscape, endow the building with a certain humility, without foregoing its actual identity.

