

VOL 26 ISSUE 3 / MALAYSIA RM15.50 SINGAPORE SGD11.00 OTHERS USD8.00 / THE OFFICIAL MAGAZINE OF THE MALAYSIAN INSTITUTE OF ARCHITECTS

# architecturemalaysia

## EXPERIENTIAL ARCHITECTURE

SPICES RESIDENCE  
GLAD TIDINGS  
EARLY YEARS CENTRE  
SMEG GALLERY  
CALVARY CONVENTION CENTRE  
DAYABUMI CORPORATE LOBBY  
NEW ANNEX OF ST MARY  
LEGOLAND MALAYSIA

PLUS PUTTING LINES ON PAPER - SKETCHES OF A ROVING ARCHITECT, REVISITING  
PUTRAJAYA & BATU CAVES, AN EXPERIENCE OF DINING IN THE DARK, IN  
CONVERSATION WITH DAVID MIZAN, TWO YOUNG ARCHITECTS ABROAD



9 771675 568003

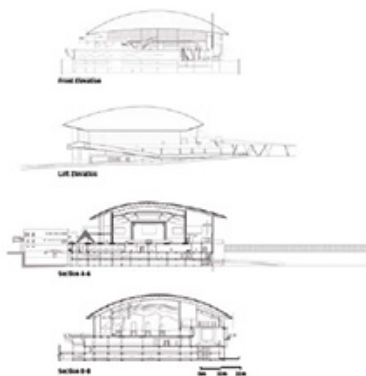
**N**erfed at the old industrial district of Section 13, Petaling Jaya, Glad Tidings Vision Centre (GTVV) is a visual respite from its dense surroundings. It is strategically located amidst established and flourishing neighbourhoods, which are predominantly residential.

The brief called for a revamp and upgrade of the old church facilities due to the growing congregation. The new building comprises a multipurpose hall, a garden chapel (for wedding, water baptism, prayer and meditation), and outdoor functions, prayer hall, prayer chapel, function rooms for meetings and seminars, and car parking facilities.

The 23,325 sqm edifice is envisioned as an iconic landmark created as a gesture but set in a concrete jungle of placebos, with its white shell-like roof engulfing the site. Its monumental form is juxtaposed with carefully wrought materials and finishes on a

more accessible human scale. Rising from a two-storey "solid rock base", concrete buttresses reinforce the three-storey mass, which is crowned by a composite-like, double curved standing seam roof on a site area of 17,556 sqm. The exterior of GTVV has naturally weathered finishes - cement plastered walls, off-form concrete walls and unplastered common clay brickwork. These raw unadorned surfaces interweave with three-dimensional concrete chevron patterns on the walls, and concrete fins at the car park levels.

**Entrance and Circulation**  
The canopy roof extends from the main building, directing the administrative block, and tapers towards the entrance by angled round steel columns, the design sketched unduly of the metal roof provides a warm ambience against the



All three pictures are showing the prayer and congregation halls.

ubiquitous raw concrete surfaces.

The main lobby staircase linking its five storeys - LG1, LG2, Ground Level, Level 1 and Level 2 - is a spiralling and toning masonry enclosure within exposed brick walls and glass enclosure. The stairwell has a sweeping view of the neighbourhood with an outlook at the 2nd floor lobby. Traversing within GTVV is never monotonous, polished tiles and unplastered brick wall corridors extend to

spacious triple-volume foyer that features an ephemeral cross created when light filters through its linear slits, and naturally its lobbies with views.

**Courtyard**  
The garden chapel is created as a courtyard with brick paved grounds for outdoor functions. A tented metal roof structure serves as the wedding chapel on one end and a concrete wood sculptured as an immersion pool for baptism on the other. Beyond the baptismal

pool, appended to the stairwell is a prominent white crucifix fullboard out of steel beams. This transitional space is couple between the old and the new; the rehabilitated existing administrative block and the unadorned aesthetic of GTVV, both structures congregated to form and embrace the courtyard.

From the courtyard below its roof, the new building has five glass panels outlined by symbolic fish fins on the brick wall. What seems to be rather

random and meaningless composition is in actual fact the configuration of the letters "T" and "C" in Braille.

**Multipurpose Hall**  
The multipurpose hall exploits the common curves underside of the roof as the ceiling is moulded into the lobby volume and underlain with acoustic ceiling panels. The acoustically treated space, which has a stage and lobby, can fit 1,200 persons in auditorium arrangement and 800 for

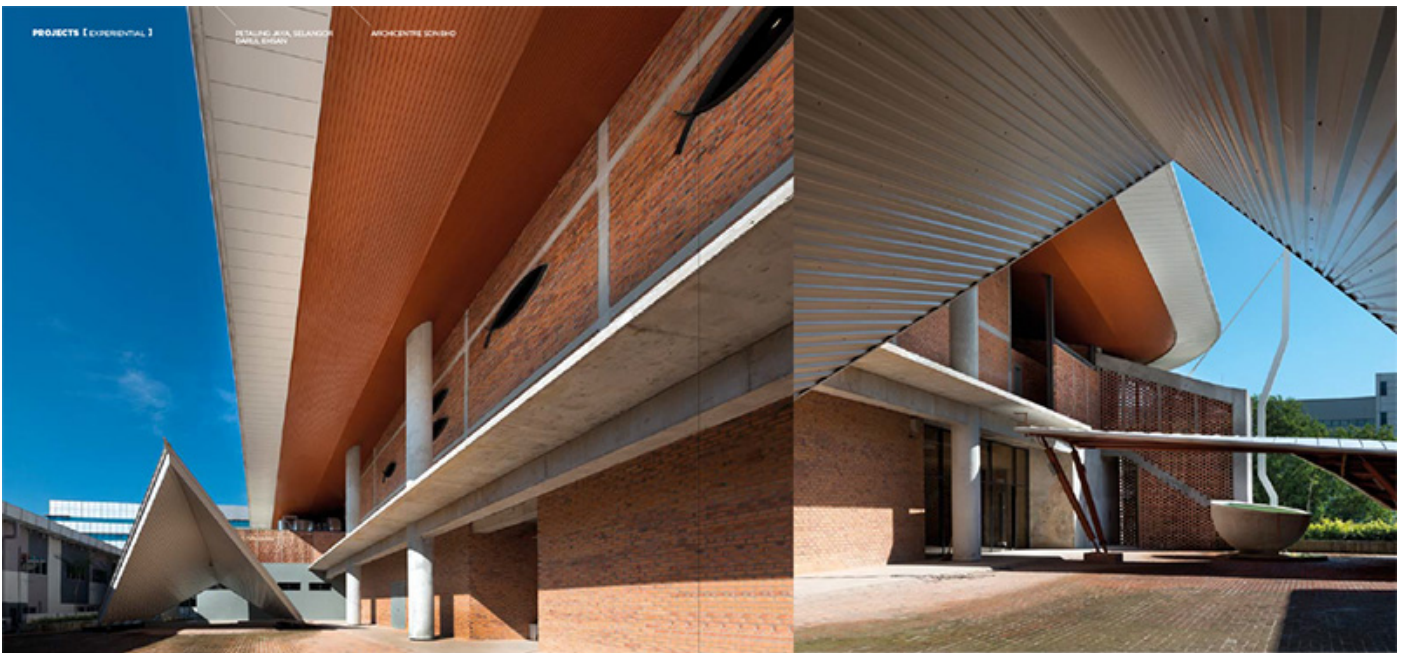
FIGURE 071 - Image sketched unduly of the metal roof - a warm ambience against raw concrete surfaces; prayer chapel (center details); sketched view into the Prayer Hall



PROJECTS [ EXPERIMENTAL ]

DETAILING, JWA, SELAVANOR  
DARRELL HENRY

ARCHCENTRE SONBRO



A spiritual centre is designed to capture the attention of the visitors with its sculpted presence.

sophisticated architecture and subtle natural finishes.

# GLAD TIDINGS



busquet seating. Other ancillary facilities include a catering kitchen, service corridor and changing rooms. The hall also doubles as a sports complex for basketball, badminton, volleyball, tennis and gym.

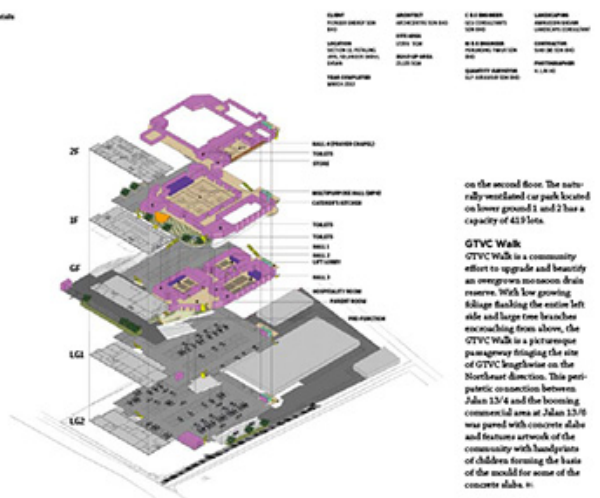
**Prayer Halls**  
The prayer halls are accessible via the main entrance on the ground level. The capacious reception area continues into a wide corridor that allows congregations from the three shukling halls to spill onto and intermingle with much ease. Hall 1 that accommodates up to 600 people boasts a double-volume space blessed with natural daylight through a series of clerestory windows. Prayer Halls 2 and 3 are single volume spaces that fit 400 and 300 people respectively. Despite the modern outlook, technology and comforts, the acoustically treated halls adhere to the traditional norms, style and form configuration. Every hall has an attached parent room.

**Prayer Chapel**  
Located at the highest level of the building, the chamber designed for 24/7 prayer sessions. There are 12 prayer cubicles dedicated to solitary praying. Backed by a solid timber paneled wall in deep stained mahogany in contrast with the floor labelling timber strip of the floor, the chapel is intended to create a raw yet cozy atmosphere.

**Ancillary Facilities**  
The pre-function area is an integral part of the community centre. Ample space has been allocated to facilitate a wide range of activities. Smaller function rooms for flexible use are also available. These rooms can be used as meeting rooms, book/gift shops, and offices. In support for these are positive for office and administrative use located near the reception area on the ground floor, and



Multi-use details



on the second floor the naturally ventilated car park located on lower ground 1 and 2 has a capacity of 419 lots.

**GTVC Walk**  
GTVC Walk is a community effort to upgrade and beautify an overgrown motorway drain reserve. With low growing foliage flanking the entire left side and large tree branches overhanging from above, the GTVC Walk is a picturesque passageway bringing the site of GTVC lengthwise on the MacLaurin direction. This picturesque connection between Jalan 13/4 and the booming commercial area at Jalan 13/6 was paved with concrete slabs and features artwork of the community with handprints of children forming the basis of the mould for some of the concrete slabs.

Pre-function area



Exterior view

