



100 Architects of the year 2015
International Invitational Exhibition

AR. DR. TAN LOKE MUN

Above person has been chosen as one of "100 architects of the year" 2015
by Korean Institute of Architects

21 October 2015

A handwritten signature in black ink, appearing to read 'Esa Mohamed'.

President of UIA
Esa Mohamed

A handwritten signature in black ink, appearing to read 'Jong Ruhl Hahn'.

President of KIA
Jong Ruhl Hahn



AR. DR. TAN LOKE MUN

ARCHICENTRE SDN. BHD.

SETIA CITY CONVENTION CENTRE

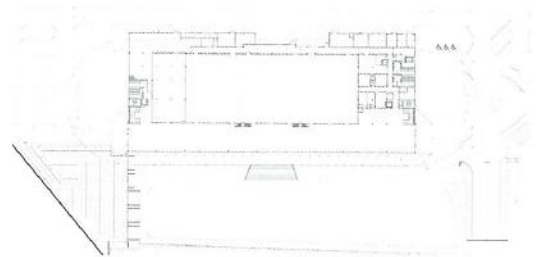
Selangor, Malaysia

Setia City Convention Centre (SCCC) is a multi-purpose convention centre that caters to MICE (meetings, incentives, conferences, exhibitions) and banqueting. It is located in the centre of Setia City, a 240 acre integrated green commercial city. SCCC comprises 99,290 sq ft (9,224 sq m) spread over two levels, built on a 10.5 acre site. It fronts the central city park and is adjacent to the Setia City Mall with convenient access to all amenities.

SCCC was conceptualised in the image of a glistening silver fishing lure on the surface of the city lake. The very large elliptical metal roof is suspended off the grassy knoll by a classical array of slim white steel columns. The formal colonnade forms a long verandah that provides the interface between the park and the formal interior spaces. On its elevated vantage point, the large elliptical roof forms an iconic feature for the newly developed urban hub.

The building houses a restaurant and a grand ballroom capable of accommodating 200 tables in a banquet layout on the ground floor, while the upper floor consists of 8 smaller function rooms. The enclosed ballrooms and function rooms are accessed via the large pre-function space in the form of an enclosed verandah that overlooks the central park and lake. A central service corridor services all the ballrooms and function spaces from the rear. An events lawn that provides an ideal space for a wide range of outdoor activities and events is situated just outside of the pre function verandah. This is complemented by several wedding pavilions strategically planted into the central park.

SCCC is a GBI Certified Green Building. It's green features include a complete Energy Management System, solar PV for renewable energy, solar hot water supply, carbon dioxide monitoring and control systems, energy saving lamps, generous open and green spaces, recycling bins, rainwater harvesting, water efficient fittings, and special facilities for green vehicles.





Location: Setia Alam, Shah Alam, Selangor, Malaysia
Height/Storey: 2F
Building area: 42,470m²
Gross floor area: 9,224m²
Structure: RC column with steel truss for roof
Exterior finishing: plaster, paint
Design period: May - July 2011
Completion date: Oct. 2012

