



AWARDS
REKA 2015

MIID NIPPON PAINT REKA AWARDS

**DESIGN
EXCELLENCE**

The Premier Interior Design Awards of Malaysia

WINNING & SHORTLISTED ENTRIES





23 Terrace

PROJECT DESCRIPTION

23 Terrace is a new double-storey terrace house reconfigured in place of its single-storey predecessor. During day, the façade is a typical contemporary terrace house with large openings, glass balustrade and minimalist security door grille and gate. At dusk, the house transforms into a lantern, casting surrealistic shadows on the cement rendered porch.

The renovation process is a simple design exercise of "form follows function" where the needs of the occupants takes precedence. The living area has a feature wall of exposed brick, which is one of the few remnants from the old house. Ten-foot high walls flank the entire length of the terrace, with open-faced brick walls bordering the grass strip for privacy and acoustic reasons.

This new form and height of 23 Terrace are rejuvenating revisions of the 70's single-storey terrace. It is a baby step towards the greening of the neighbourhood, an attempt to educate the community about the importance of green retrofitting.

JURY CITATION

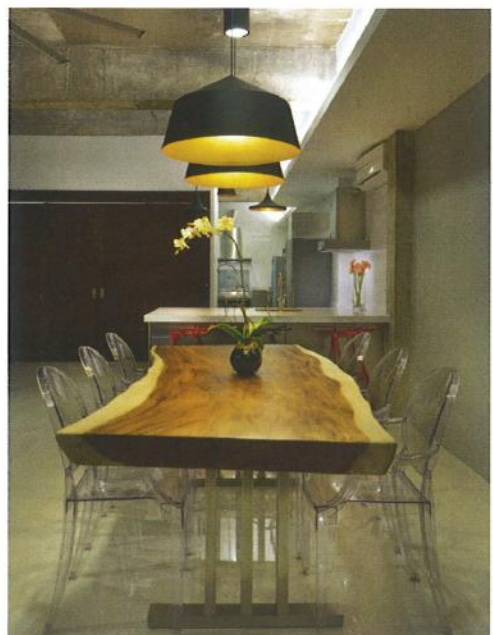
Uncluttered, the unique look of raw materials is celebrated and clearly reflected in this design. The selection of simple, statement driven furniture completes the look of this space.



COMPANY
DRTAN LM ARCHITECT

INTERIOR DESIGNER
AR DR TAN LOKE MUN

CLIENT
MR ANDYONG HEAN KHENG





COMPANY
DRTAN LM ARCHITECT

INTERIOR DESIGNER
AR DR TAN LOKE MUN

CLIENT
MARINI'S GROUP

M. Marini

PROJECT DESCRIPTION

Set within the enclave of couture brands at the Concourse Level of Suria KLCC, M Marini is an Italian café serving caviar and champagne that exudes a contemporary Italian ambience anchored by a minimalist backdrop accented by classical furnishing with opulent upholstery, marble finishes and unexpected optical punctuations. A black marquina marble wall encapsulates the café, with subtly illuminated underwall lights visually suspending the entire island. The interior maintains the meticulous execution of lavish marble and granite, sumptuous damask, and ornate cast iron table legs in an open layout fusing dining and bar. This allegory of modern clean lines with eclectic measures of baroque and classical hints is further enhanced by symbols of strength and freedom in the form of iconic art replicas. M Marini epitomises the ideal of casual/fine dining in a lush ambience that satisfies both the palate and the visually palatable.

